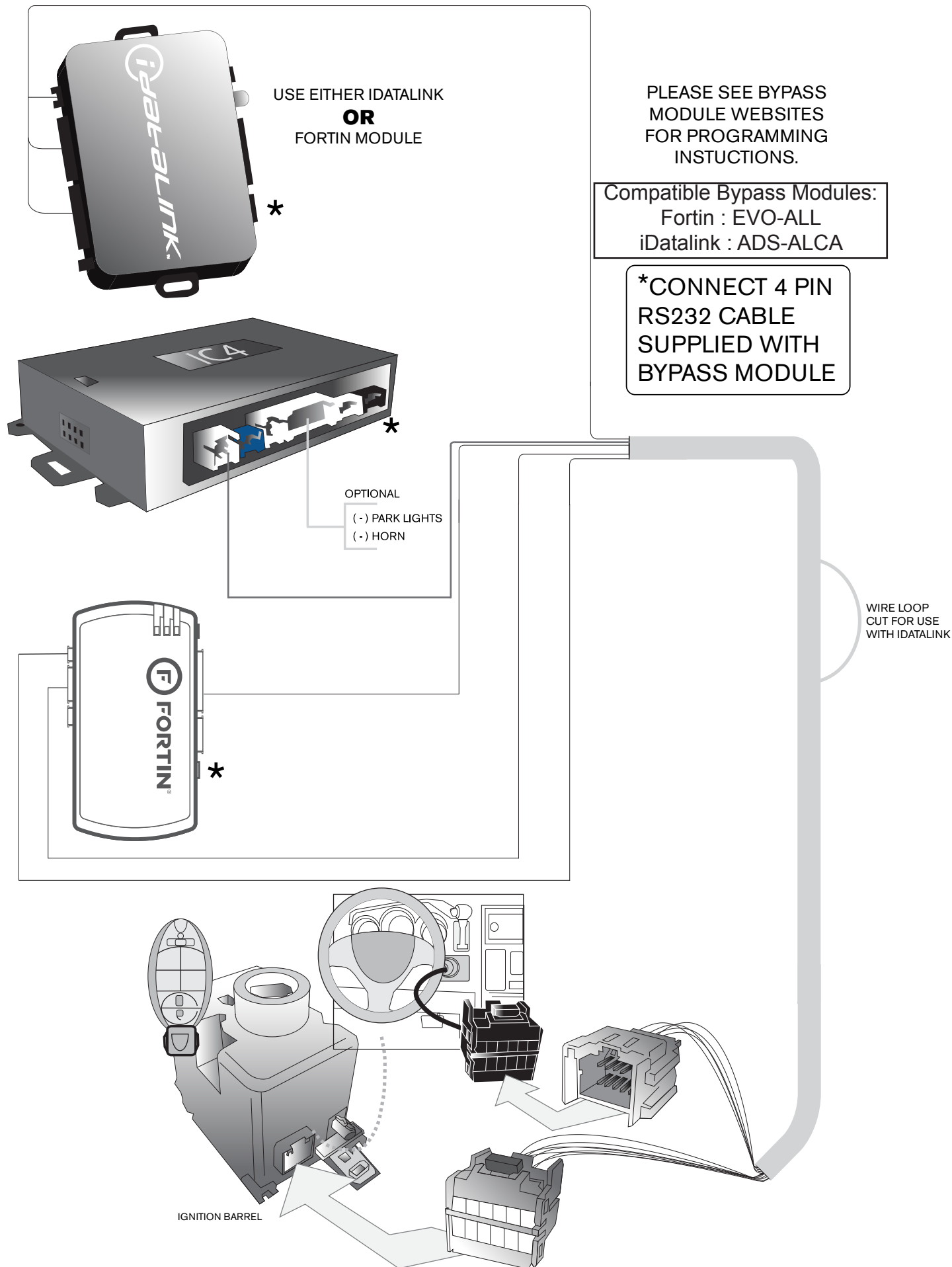


Chrysler T-Harness



Quick Install Guide (FW Ver 51+)

For complete guide please visit: www.solaceremotestarters.com



This module has been designed to install on BOTH Automatic and Manual Transmission vehicles, with 1-Way AM or 2-Way FM/SST RF Kits, and also operate as a Starter Only, Starter with Alarm, Alarm, or Keyless Entry.

Selecting Program Option Within a Menu

1. Enter Program Mode and select desired Menu
2. Press and release the Valet (Program) Button the correct number of times to select the desired Feature. The park lights will flash once and the siren/horn will chirp each time the programming button is pressed. The LEDs in the antenna will flash in sets to indicate which Feature Menu has been selected.
3. (3 flashes = Feature 3 M1-03, M2-03, etc.)

CHANGING A FEATURE SETTING

1. Once the correct Feature Menu has been selected, press and hold the Program Button until the park lights flash and the siren/horn chirps to confirm the desired setting.

For example:

- 1 park light flash and 1 chirp = Setting 1
- 2 park light flashes and 2 chirps = Setting 2
- 3 park light flashes and 3 chirps = Setting 3

The LEDs will continue to flash indicating which Feature Menu you are in (Note: LEDs turn off when the programming button is held down).

NOTE: Turning the ignition key to the off position or 15 seconds of no activity will exit program mode. **Specific Output Times can only be programmed with the Solace Hand Held Programmer.

MASTER RESET (To reset ALL menus)

1. Turn ignition ON-OFF-ON. (Leaving Key in ON position)
2. Press and release the valet switch 3 times. The parking lights will flash and the siren/horn will chirp 3 times on 3rd press to confirm.
3. Press and Hold valet button for 3 seconds. The system will confirm with 5 siren/horn pulses & park light flashes to confirm system reset was activated
4. Turn off ignition.

IT IS RECOMENDED TO PERFORM A MASTER RESET AFTER UPGRADING FIRMWARE.

Be sure to use the latest SHHP FW with the latest firmware updated as Menu options may have changed order

REMOTE START / ALARM LED / PARK LIGHT Diagnostics

If there is a failed remote start or Alarm trigger please see table below for LED and/or Park Light Diagnostics

	REMOTE START (P. LIGHT)	ALARM TRIGGER (LED)
3 LED / P. LIGHT FLASHES	NOT IN READY MODE	SHOCK SENSOR TRIGGER
4 LED / P. LIGHT FLASHES	FOOT BRAKE ON	FOOT BRAKE TRIGGER
5 LED / P. LIGHT FLASHES	VALET MODE ON	DOOR OPEN TRIGGER
6 LED / P. LIGHT FLASHES	HOOD OPEN	HOOD OPEN TRIGGER
7 LED / P. LIGHT FLASHES	REMOTE START FAILURE	AUX INPUT TRIGGER
8 LED / P. LIGHT FLASHES	IGNITION ON	IGNITION ON TRIGGER

VALET MODE - To Enter/Exit Valet mode, turn Ignition On and within 5 seconds and press and hold valet button for programmed time (see M3-09).

REMOTE SLEEP MODE

Available on the 2-Way LED and 2-Way LCD remote transmitters, this function allows you to put your remote into Sleep Mode so that you do not have unnecessary battery life drain when away from your vehicle for extended period of time.

Press and Hold & for approximately 8 seconds to put your remote into Sleep Mode or to take it out of Sleep Mode.

TRANSMITTER LEARNING

Important! The remote starter will hold 3 transmitter codes. It is recommended that when programming in transmitters, you fill up all four transmitter codes, even if only using one or two transmitters. This will clear all other transmitter coding from the unit and prevent stray coding or possible interference from other remote transmitters.

1. Turn ignition ON-OFF-ON.
2. Press the valet switch TWICE (button) in the antenna, siren/horn (optional) will chirp once each time button is pressed.
3. Press and hold the valet switch, siren/horn will chirp 3 times & parking lights will turn on to indicate you have entered Transmitter Learning Mode.
4. Press button 1 (Lock) of every transmitter to be coded. The siren/horn will chirp once and the parking lights will flash once to indicate successfully learning. System will exit Learn Mode and lights will turn off after 15 seconds of no activity. ***For 2-Button Remote press both Buttons. For 1-Button press start button. To change features see M3 - 14.
5. Turn ignition OFF and the unit will exit code-learning mode.

TACH LEARNING

1. Start the vehicle with the key.
2. Press and hold Foot Brake.
3. Within 10 seconds, press and release the valet switch. The unit will enter Tach Learning Mode automatically (LED will begin to flash). The park lights will flash the number of times below for the saved tach mode.
 - 2 FLASHES - Tach Learn
 - 3 FLASHES - Data Tach Learn
 - 4 FLASHES - Tachless Mode
 - 10 FLASHES - Tachless Mode Not Allowed in Manual Transmission Mode

ENTERING PROGRAM MODE

1. Turn ignition ON-OFF-ON. (Leaving Key is ON position)
2. Press the valet switch 1 time and release. The parking lights will flash and the siren/horn will chirp once to confirm.
3. Press and Hold valet button for 3 seconds. The system confirm with 1 siren/horn pulse and park light flash to confirm you it is now in Program Mode.

SELECTING PROGRAM MENU (4 Button Remote Required)

1. Once Program mode has been entered, pressing the remote will select the different program menus as below.

- Button 1 will select MENU 1 - 1 light flash siren / horn chirp
- Button 2 will select MENU 2 - 2 light flashes siren / horn chirps

Once a MENU is selected by remote, the system will be in Setting 0, which is the reset to default for that Menu (See MENU RESET).

**NOTE - Menu 3 & 4 are only accesible with ther SHHP.

Menu 1 (Lock Features)							
Sub Menu	Feature	Option 1 (Default)	Option 2	Option 3	Option 4	Option 5	Option 6
1 - 00	Menu Reset						
1 - 01	Ignition Locks	Disabled	Enabled	Both - Lock Only with Tach	Unlock Only		
1 - 02	Lock / Unlock Options	Lock x 1 / Unlock x 1	Lock x 1 / Unlock x 2	Lock x 2 / Unlock x 1	Lock x 2 / Unlock x 2		
1 - 03	Lock Pulse Timing	800 ms	100 ms	3 Seconds	8 Seconds	1 - 255 Seconds**	
1 - 04	Unlock Pulse Timing	800 ms	100 ms	3 Seconds	8 Seconds	1 - 255 Seconds**	
1 - 05	Special Doorlock Options	Normal	Unlock Before & Lock After Start	Lock After Shutdown Only	Unlock Before / Lock After Start and Shutdown	Lock After Start Only	Delayed Door Lock After Shutdown (Ignore Open Door)
1 - 06	Disarm Options	Normal and With Unlock	Ignition / Accessory / GWR with Unlock	Disarm x 2			
1 - 07	Rearm Options	Normal and With Lock	With Lock Only	Only After Shutdown	With Lock / After Start / After Shutdown		
1 - 08	Trunk Disarm	Disarm & Unlock Before	Disarm Only Before	Smart Disarm (Trunk Pin Monitoring)	Trunk Only		
1 - 09	Trunk Pulse Timing	800 ms	100 ms	3 Seconds	8 Seconds	1 - 255 Seconds**	
1 - 10	Auxiliary Disarm	Auxiliary only	Disarm Only Before	Disarm & Unlock Before			
1 - 11	Passive Arming (Door Sense Required)	Disabled	GWA On (30 Seconds)	Lock and GWA (30 Seconds)	Lock and GWA (60 Seconds)		
1 - 12	Auto Relock (Door Sense Required)	Disabled	30 Seconds	1 Minute	2 Minutes	1 - 255 Seconds**	
1 - 13	Reservation Mode Setup	Press Lock on Remote to Shut off Vehicle	After Last Door Shut (No Lock)	After Last Door Shut (With Lock)	After Last Door Shut (5 Second Delay With Lock)		
1 - 14	Reservation Mode Activation	Emergency Brake	Foot Brake Twice	Remote Activation	Option 1 Silent	Option 2 Silent	Option 3 Silent
1 - 15	Data Status Input Disable	Door Status	Hood Status	Trunk Status	Tach Status	E-Brake Status	Foot Brake Status
1 - 16	Data Alarm Input Disable	Ignition Status	Pre-Warn Shock Status	Trigger Shock Status	Tilt Status		
1 - 17	Takeover Unlock	Unlock with Takeover	No Unlock with Takeover				
1 - 18	PTS Routine (Auto Only) (Door Sense Required)	Disabled	Enabled (No Takeover Available)				
1 - 19	PTS Timing	0.5 Second 1x ON / OFF	1 Second 1x ON / OFF	2 Second 1x ON / OFF	0.5 Second 2x ON / 1x OFF	1 Second 2x ON / 1x OFF	

Menu 2 (Start Features)							
Sub Menu	Feature	Option 1 (Default)	Option 2	Option 3	Option 4	Option 5	Option 6 - 7
2 - 00	Menu Reset						
2 - 01	Selectable (+) Output CN1 & Relay Pack	(+) Ignition	(+) Accessory	(+) Starter	(+) Trunk	(+) Brake Output for PTS Start Sequence	Option 6 - (+) Siren Option 7 - (+) Park Light
2 - 02	Remote Start Runtime	15 Minutes	3 Minutes	45 Minutes	25 Minutes	1 - 255 Minutes**	
2 - 03	Tach Delay (Undercrank)	No Delay	0.2 Second	0.5 Second	0.7 Second	1 Second	
2 - 04	Diesel Start Delay	Gas / Glow Plug Wire For IC4 use Multiplex Wire	8 Second Delay	15 Second Delay	10 Second Delay Twice with Crank on 2nd Cycle	1 - 255 Seconds**	
2 - 05	Multiplex Input	Disabled (Aux Trigger ON)	On with 1x Pulse Start / Stop	On with 2x Pulse Start / Stop	On with 3x Pulse Start / Stop	Glo Plug Wire Delay Input	
2 - 06	Defrost Pulse Timing	500ms	3.5 Second	4 Minute Latch	On for Runtime	1 - 255 Seconds**	
2 - 07	Defrost Control Temperature	On with Remote Start	Below 41 F / 5 C	Below 23 F / -5 C	Below 5 F / -15 C		
2 - 08	Cold Temperature Start	14 F / -10 C	23 F / -5 C	5 F / -15 C	-4 F / -20 C		
2 - 09	Cold Start Check Time	2 Hour	3 hour	4 Hour	24 Hour	1 - 255 Hours**	
2 - 10	Cold Start Runtime	10 Minutes	3 Minutes	15 Minutes	45 Minutes	1 - 255 Minutes**	
2 - 11	Bypass Module Selection	iDatalink (ADS) 2-Way	iDatalink (ADS) 1-Way	Fortin 2-Way (Auto Detect)	Fortin 1-Way	Expresskit	
2 - 12	Engine Sensing	Tach Wire Detect	Tachless / Voltage Sense (Automatic Only)	Data Tach (Bypass Module)	Hybrid Start 2.5 Sec Crank (No Monitoring)		
2 - 13	Turbo Timer Activation	Remote (2 Minutes)	Remote (1 minute)	E-Brake (2 Minutes)	E-Brake (1 Minute)		
2 - 14	ECO-RUN Temp. (Anti-Idle)	Disabled	23 F / -5 C	32 F / 0 C	41 F / 5 C		
2 - 15	ECO-RUN Runtime (Anti-Idle)	Disabled	5 Minutes	2 Minutes	7 Minutes	1 - 255 Minutes**	
2 - 16	ECO-RUN Shutdown Temperature	Disabled	50 F / 10 C	68 F / 20 C	77 F / 25 C		
2 - 17	Max Crank Time in Tach Mode	5 Seconds	1 Second	2 Seconds	3 Seconds	7 Seconds	10 Seconds
2 - 18	Selectable (+) Output IC4 (CN1)	(+) Ignition	(+) Accessory	(+) Starter	(+) Trunk	(+) Brake Output for PTS Start Sequence	(+) Siren
2 - 19	Crank Time (Voltage Sense Mode)	1 Second	0.6 Seconds	0.8 Seconds	1.2 Seconds	1.5 Seconds	3 Seconds

Menu 3 (Alarm Features)**SHHP ONLY							
Sub Menu	Feature	Option 1 (Default)	Option 2	Option 3	Option 4	Option 5	Option 6
3 - 00	Menu Reset						
3 - 01	Park Light Output	Normal Flashes	30 Seconds After Unlock	1 minute After Unlock	1 Minute After Ignition Off		
3 - 02	Door Fault Delay	1 Second	10 Seconds	30 Seconds	Auto (1 Minute Max)	1 - 255 Seconds**	
3 - 03	Alarm Options	Remote Starter Only	Remote Starter with Alarm	Alarm Only			
3 - 04	Alarm Duration	1 Minute	30 Seconds	2 Minutes	1 Minute Pulsing	1 - 255 Seconds**	
3 - 05	Siren Output	Enabled	Alarm Trigger Only	Silent Lock / Unlock	Program and Valet Only		
3 - 06	Horn Output	Enabled	Alarm Trigger Only	2nd Press Lock and Alarm	Silent Lock / Unlock	Program and Valet Only	
3 - 07	Horn Output on Alarm	Pulsed for Duration	5 Second Pulsed Output	Constant (- 2nd Siren)			
3 - 08	Horn Pulse Timing	10 ms	20 ms	30 ms	50 ms	1 - 2550 ms**	
3 - 09	Hood Pin Type	Ground When Opened	Ground When Closed				
3 - 10	LED Status	Enabled	Disabled				
3 - 11	Safe Start (1 - Way Remotes Only)	Press Start Button 1x	Press Start Button 2x				
3 - 12	OEM Remote Start Control	Disabled	OEM RF Lock 3x to Start				
3 - 13	2 Button Remote Function	Lock and Start	Lock / Unlock Toggle and Start	Unlock and Start			

Menu 4 (Programmable Outputs)** SHHP ONLY							
Sub Menu	Feature	Option 1 (Default)	Option 2	Option 3	Option 4	Option 5	Option 6 - 19
4 - 00	Menu Reset						
4 - 01	Trunk Release Function	Pulsed Output	Latched Output				
4 - 02	(-) Disarm Output PIN 1 (CN3)	(-) Disarm	(-) Rearm	(-) Lock	(-) Unlock	(-) 2nd Unlock	
4 - 03	(-) Rearm Output PIN 2 (CN3)	(-) Rearm	(-) Disarm	(-) Lock	(-) Unlock	(-) 2nd Unlock	
4 - 04	(-) GWA Output PIN 12 (CN3)	(-) Ground While Armed	(-) Ground While Running	(-) Accessory	(-) Starter	See Chart Below	
4 - 05	(-) Ignition Output PIN 13 (CN3)	(-) Ignition	(-) Accessory	(-) Starter	(-) Push-to-Start Button Output	See Chart Below*	
4 - 06	(-) Accessory Output PIN 14 (CN3)	(-) Accessory	(-) Ignition	(-) Starter	(-) Push-to-Start Button Output	See Chart Below*	
4 - 07	(-) Starter Output PIN 15 (CN3)	(-) Starter	(-) Ignition	(-) Accessory	(-) Push-to-Start Button Output	See Chart Below*	
4 - 08	(-) Park Light Output PIN 16 (CN3)	(-) Park Light	(-) Ignition	(-) Accessory	(-) Push-to-Start Button Output	See Chart Below*	
4 - 09	AUX 1 Pulse Timing	800ms	Latched Output	2 Second	4 Second	1 - 255 Seconds**	
4 - 10	AUX 2 Pulse Timing	800ms	Latched Output	2 Second	4 Second	1 - 255 Seconds**	
4 - 11	AUX 3 Pulse Timing	800ms	Latched Output	2 Second	4 Second	1 - 255 Seconds**	
4 - 12	AUX 4 Pulse Timing	800ms	Latched Output	2 Second	4 Second	1 - 255 Seconds**	
4 - 13	AUX 1 Control	Remote	With Lock	With Unlock	On 30 Seconds After Unlock	On 30 Seconds After Lock	
4 - 14	AUX 2 Control	Remote	With Lock	With Unlock	On 30 Seconds After Unlock	On 30 Seconds After Lock	
4 - 15	AUX 3 Control	Remote (LCD Only)	With Lock	With Unlock	On 30 Seconds After Unlock	On 30 Seconds After Lock	Programmable Outputs**
4 - 16	AUX 4 Control	Remote (LCD Only)	With Lock	With Unlock	On 30 Seconds After Unlock	On 30 Seconds After Lock	Programmable Outputs**

For Menu 4-04 to 4-08 Options are below			
Option 5 - (-) GWR	Option 6 - (-) GWA	Option 7 - (-) Park Light	Option 8 - (-) 2nd Unlock
Option 9 - (-) Defrost	Option 10 - (-) Horn	Option 11 - (-) Siren	Option 12 - (-) Dome Light
Option 13 - (-) LED Output	Option 14 - (-) Disarm	Option 15 - (-) Rearm	Option 16 - (-) AUX 1
Option 17 - (-) AUX 2	Option 18 - (-) AUX 3	Option 19 - (-) AUX 4	

** Note - Specific times and features can only be programmed with the SHHP (Solace Handheld Programmer)**